



Wolf Handlamp SLH-SB8/SLH-SB8F

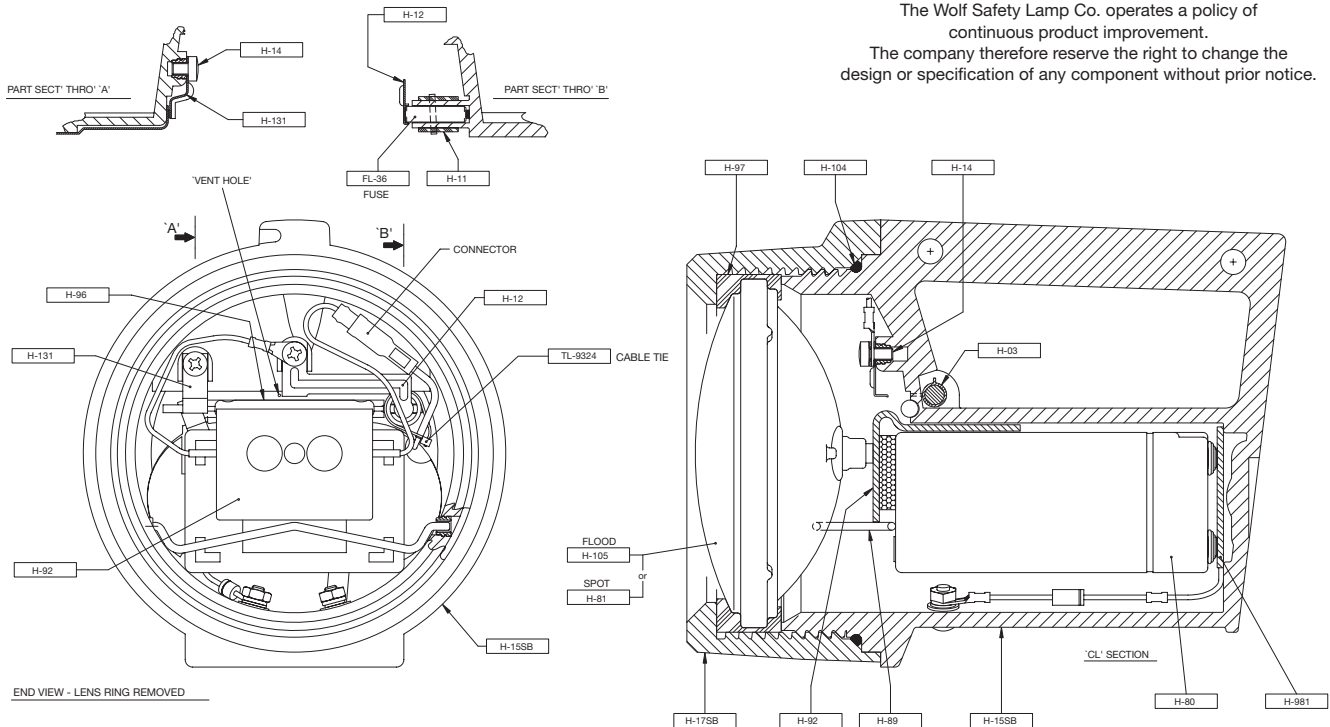
Operation and maintenance Instructions

Read full operating instructions before use.

Repair work may ONLY be carried out by qualified personnel, using components supplied or approved by the company and, in accordance with their instructions.

The Wolf Safety Lamp Co. operates a policy of continuous product improvement.

The company therefore reserve the right to change the design or specification of any component without prior notice.



Introduction

The SLH-SB8(F) is a **Fireman's Handlamp** with a bright focused long range beam or the option of a close quarters wide angle, short range flood. The light sources are all glass sealed beam units which are easily replaceable or transferable with change of application. The six volt rechargeable sealed lead acid gel battery is also easily replaceable, average life is 500 charge discharge cycles.

Mains and vehicle charging holders are available.

Lamp Model Range

SLH-SB8 Day-glow Orange - Spot Beam

SLH-SB8F Day-glow Orange - Flood Beam

To Change the Bulb (Sealed Beam Unit)

The Sealed beam unit is the bulb (lamp), reflector and impact resistant lens, all in one component. It is fitted in the lens ring of the lamp without the need for any battery leads and is very easy to replace. The Lamp Contacts connect to a Contact Plate as the Lens Ring is assembled.

- Use of a single grooved moulded rubber washer with internal locations for the sealed beam unit and external ones for the lens ring to ensure upright positioning in the fully assembled lamp. See label on rear of sealed beam.

To Operate and Dismantle the Switch

The switch operates transversely, as indicated on the name plate. The switch consists of a small bar magnet in a plastic housing which operates an internal Reed Switch. The switch assembly has a plastic body, a magnet and a 'snap' fitting cap.

The old cap is prised from the body for removal and the new switch is fitted into the guide on the body from the same side. Then the cap is 'snapped' in place on to the new assembly.

To Change Fuse, Reed Switch or Contact Plate

The fuse is fitted in a split tubular housing within the Lamp body and is anchored by the fuse contact. To avoid damage this contact must be removed when replacing the fuse. Both fastening screws, the contacts and the fuse must be removed before replacing the Reed Switch.

The Contact Plate is 'L' shaped; the foot locates in the battery cavity and on top it has two contact studs, pressure sprung on to the top of the battery. One of the flying leads of the Contact Plate fits under the fuse contact screw and the other lead has an in-line connector enabling easy and reliable replacement of this item.

The Battery

The Battery is derived from a standard 6V sealed lead acid gel type of 4.5 Ah but with modified terminals fitted with springs. From the 8 watt spot sealed beam the output is 2 to 3 hours, whereas for the 10 watt flood it is 2 to 2.5 hours.

For optimum performance please observe the following:-

- Charge before first use
- Recharge immediately when flat
- Recharge every six months when stored
- Turn off when flat to avoid deep discharge

Note: Dangerous Goods Regulations
Hazardous Materials Regulations
Restricted Articles Regulations

The US Dept of Transport, IATA, and CAA declare that in connection with the above regulations these batteries are "not regulated".

Warning: Do not short-circuit or incinerate
Do not recharge other than from Wolf Chargers
Do not cut, crush or puncture
Dispose of only via licensed disposal agency

UL Listing

Code: CLASS1, DIVISION 2, GROUPS A,B,C & D,
TEMPERATURE CODE T6

Charging Handlamp SLH-SB8(F)

This model of 'Wolfite' Handlamp permits **in-situ** charging of the battery from a pair of charging studs under the body. The handlamp switch must not be operated when on charge. The lamp charger is designed for bench, wall or bulkhead mounting, and the lamp is a tight fit in the charger so that in any mobile application it is well secured.

A pair of L.E.D.s indicate the state of charge of the battery and which of the two charge rates is in operation. A red light only will warn that the lamp charging studs have not made proper contact with the charger terminals; the lamp must be pushed more firmly into the charger until locked in position. A discharged battery will regain 90% of its capacity in approximately 6-7 hours in a mains charger, 10 hours from 12V supply.

As full charge approaches, cycling between main and trickle charge may continue for a period of time before settling on a permanent trickle charge.

CHARGING MUST ONLY BE CARRIED OUT IN A NON HAZARDOUS LOCATION. A FULLY DISCHARGED BATTERY MUST BE CHARGED AS SOON AS POSSIBLE TO AVOID PERMANENT DAMAGE

To Replace the Battery SLH-SB8(F)

Unscrew the Lens Ring and remove from the body. Push the over-centre battery locking clip upwards to release and continue to swing clear of the battery aperture. The battery can then be removed from the body cavity and a replacement battery fitted, the label on the bottom indicates the correct way up. The battery contacts must face down so that the orientation label can be seen. Once the locking clip has clamped (note: Clamp must be pushed fully home) the battery and the lens ring re-fastened, the lamp is ready for use. The charge state of the new battery can be checked by testing in the lamp charger, however recharging of this new battery is recommended anyway.

Lamp Chargers

Two types of lamp chargers are available – HIGH VOLTAGE and LOW VOLTAGE, to suit fixed or mobile applications.

C-115 'SLH-SB8' Charger HV is suitable for AC input voltages of 200 – 240 volts, or 100-120 volts at 50/60Hz, selected by an external voltage change-over switch. Failure to select the correct voltage may cause charger damage. Only fit manufacturer's specified 3 amp fuse. The flex to the plug is two core colour coded brown – live, blue – neutral, protection classification is Class II.

Electrical safety has been assessed to EN 60 335 – 2 – 29 and the charger is CE marked in conformance with EMC requirements.

C-100A 'SLH-SB8' Charger LV is suitable for use from DC supplies of 12 volts only; 90% recharging of a flattened battery from a **12 volt supply** will take approximately 10 hours. The two-core flex can be wired directly into the low voltage system or fitted with a suitable two-pin plug, colour coded red – positive, black – negative. Protection classification is Class III.

C-100 LV is suitable for use from DC supplies of 12 to 32 volts. A full recharge from a 12 volt supply takes 20/24 hours, from a 24 volt supply full charge is achieved in 10/12 hours. The two-core flex is red, positive and black, negative. Protection classification is Class III.

The three chargers are fully automatic and by means of a pair of L.E.D.s show a state of charge of the lamp battery as detailed on the rating plate. The two stage constant current system steps to a safe trickle charge level after the main charge is completed.

NOTE: THE CHARGER CONTACTS ARE OF LOW VOLTAGE OUTPUT AND SHORT CIRCUIT PROTECTED

WARNING: THE 'SLH-SB8' CHARGERS ARE DESIGNED FOR CHARGING 'SLH-SB8' HANDLAMPS ONLY – NO OTHER BATTERIES OR BATTERY OPERATED DEVICES ARE TO BE USED IN THESE UNITS.

Chargers should be operated in a 15°-25° C ambient temperature.

USE OF 'SLH-SB8' HANDLAMP

- Chargers must be kept and operated in clean and dry conditions; a damaged lamp should be carefully examined for its continued safety. If in doubt, it should be withdrawn from use and returned to the manufacturer for repair.
- The Handlamp mouldings may constitute a static hazard and should be cleaned only with a wet cloth.
- Heavily soiled lamps must not be immersed in water or exposed to high pressure water jets for cleaning.
- In wet working conditions, the use of the SLH-SB8(F) is acceptable as it has a high degree of water resistance to IP 66
- Maintenance and repair must be carried out by a competent technician/electrician familiar with good working practices and in accordance with these maintenance instructions, **using factory supplied spare parts only.**
- The Wolf Safety Lamp Co. Ltd. have a policy of continuous product review and improvement, and therefore changes in design details may be introduced without prior notice.

Distributed by:

SAFETY LAMP OF HOUSTON INC. 1816 ROTARY DRIVE,
HUMBLE TEXAS 77338

Tel: 281 964 1019, Fax 281 964 1014,
e mail safetylampofhouston@prodigy.net

Spare Parts List

Description	Order Code	Description	Order Code
Black '0' Ring	H-104	Lens Ring - Orange	H-17SB
6V 10W Flood SB	H-105	Battery	H-80
6V 8W Sealed Beam	H-81	Battery Retaining Clip	H-89
Magnetic Switch	H-03	Contact Plate with flying leads	H-92
Sleeve for Fuse Holder	H-11	Heavy Duty Reed Switch	H-96
Contact for Fuse	H-12	Grooved Washer for SB	H-97
Contact for Reed	H-131	Battery Contact Bracket Assembly	H-981
Screw for Contacts	H-14	Fuse - 5 Amp	FL-36
Body c/w Contacts & Switches	H-15SB	Cable Tie	TL-9324

WOLF SAFETY LAMP COMPANY

Saxon Road Works, Sheffield S8 0YA, England

Tel: +44 114 255 1051 Fax: +44 114 255 7988

E-mail: info@wolf-safety.co.uk Website: www.wolf-safety.co.uk

